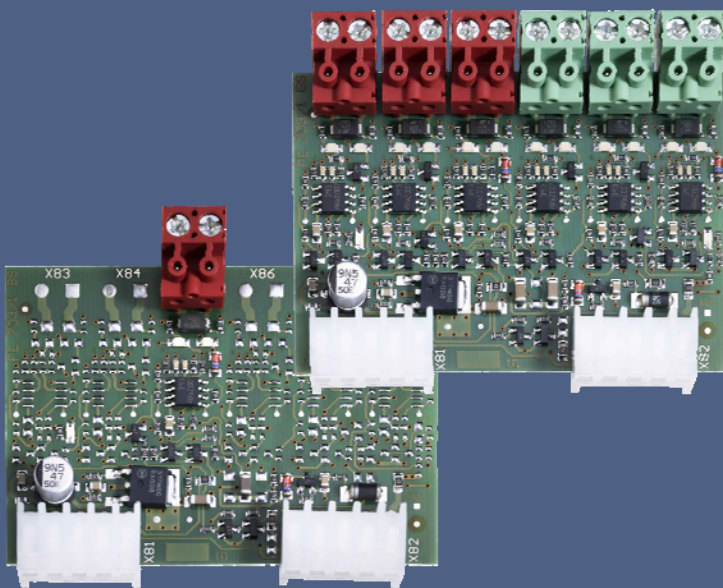


TST SURA1-A / TST SURA6-A Safety Resistance Evaluator for door systems



FEATURES

- Plug-in module for safety edge evaluation of 1 resp. up to 6 safety edges with 8k2 terminating resistor
- LED diagnosis for activation and disturbance of the safety edge(s)
- Up to 2 parameterized output channels to the door control unit (e.g. separate reactions during opening and closing of the door)





Ordering designations

TST SURA1-A
Safety resistance evaluator for gate systems
(1 resistance evaluator)

TST SURA6-A
Safety resistance evaluator for gate systems
(6 resistance evaluators)

TECHNICAL DATA

Dimensions (L x W x H)	70 x 60 x 15 mm
Weight	SURA 1 19 g SURA 6 34 g
Supply voltage	24 V _{DC} +/-20%
Operating temperature	-20°C up to 70°C
Storage temperature	-20°C up to 70°C
Power consumption	< 60 mA SURA 6 < 30 mA SURA 1
Connection	2 x MOLEX socket strip,
Guidelines:	EN 13849-1 2008 Cat 2 EN 60335-1 2007
EMC	EN 12978

LED displays

6x LED (green)	Safety strip triggered
6x LED (red)	Safety strip defective
2x LED (orange)	Output group active

PARAMETERIZATION

The SURA 1 / SURA 6 safety resistance evaluation card must be activated in the appropriate control system.

FUNCTION

Via the plug-in card, up to 6 independent 8.2 kOhm resistors can be monitored for short circuits, interruptions and correct value range.

A grouping of 2 x 3 inputs is then made on the plug-in card, i.e. a joint output signal is formed out of three inputs signals.

Each of the six inputs has two LEDs which display the triggering and malfunction state.

Unused channels must be deactivated using a terminal resistor.