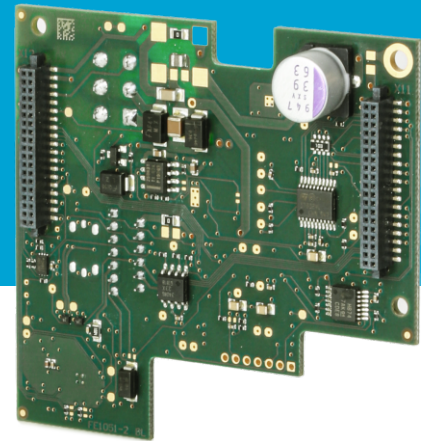


cVEND extension boards

Vending Extension Board I

- Extension module to plug onto cVEND plug
- Tailored for Vending Applications
- Extends cVEND plug with the following interfaces
 - MDB vending machine interface
 - Digital inputs / outputs
 - SAM slot for age verification (girocard only)
 - Connection for external cellular modem



With the cVEND extension boards, the contactless payment system cVEND plug can be expanded for a wide range of applications.

The extension boards are mechanically and electronically tailored to cVEND plug and can simply be plugged onto the extension plugs of the terminal.

Usage of the Vending Extension Board in combination with the cVEND plug is possible with or without the cVEND module housing.

In addition to an MDB slave interface, the vending extension board offers digital inputs/outputs that can be used by software for different applications.

USB host interfaces are also available for maintenance purposes and for high-performance communication with an external cellular modem.

The modular concept with an external modem allows the optional use of existing communication connections and flexible adaptation to changing mobile radio standards.

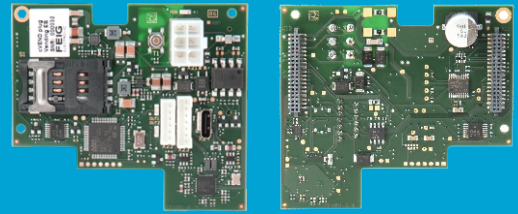
A SAM slot (ID000 format) allows the implementation of applications with security modules.

Due to the wide voltage range (8 to 42 V DC), a water-repellent coating and the wide temperature range, the cVEND Vending Extension Board is suitable for almost all vending applications indoors and outdoors.

The vending extension board also provides the basis for numerous software functions (depending on the payment application), from a flexible fixed amount system with relay control to a configurable coin checker emulation that also allows vending machines without an MDB connection to be expanded with a modern cashless payment system.

Vending Extension Board I

Extension board for cVEND plug



Technical Data

Housing	Electronics module without housing
Dimensions (W x H x D)]	
module	74 mm x 65 mm x 22.5 mm
incl. cVEND plug	79 mm x 70 mm x 40.0 mm
	79 mm x 70 mm x 52.0 mm (incl. MDB connector)
Environmental conditions	
Operation	-30 °C to +70 °C
Storage	-30 °C to +80 °C
Humidity	5 % to 95 % condensing moisture resistant coating
Power Supply	
Voltage	8 to 42 V DC
Connector	MDB 5 Volt DC connector from cVEND plug not longer accessible with the extension board attached
User interface	Additional interfaces on Vending Extension Board: 1 x LED (Status of digital output) 1 x Service button (configurable)
SAM Interface	1 x SAM Sockets ID000 (SIM-Card) format, ISO/IEC 7816 T0 / T1 protocol Voltage classes A, B, C, up to 9.6 MHz Card Clock and 600 kbit/s
Peripheral Interface	Additional interfaces on Vending Extension Board: 1 x MDB Slave 1 x USB 2.0 Host (USB-C plug) 1 x Connector with USB 2.0 Host & 12 V DC for cellular modem
Online Connection	cVEND plug: Ethernet, IP über USB Extension board: External cellular modem
Digital I/Os	Additional interfaces on the Vending Extension Board: 2 x digital output (open collector, max 300 mA, max 42 V, short-circuit proof) 2 x digital input (0 V to 24 V input voltage or potential-free)

Conformity to standards

Environment	RoHS 2011/65/EU RE 2014/43/EU
--------------------	----------------------------------

Accessories

External modem	The Vending Extension Board enables the direct connection of a separate, external cellular modems. Software support for controlling the modems is integrated into the cVEND application (GerPayApp version 2.0.5 and above). The software supports the Telic modems Telic GT910 G Telic LT910 E A cableset is available to connect the modems to the extension board.
-----------------------	---

Ordering Information

cVEND EXT.VEND Vending Extension Board I	Order number 5486.000.00
cVEND KM.A Cable set for Telic Modem (GT910-G oder LT910-E)	Order number 5157.000.00